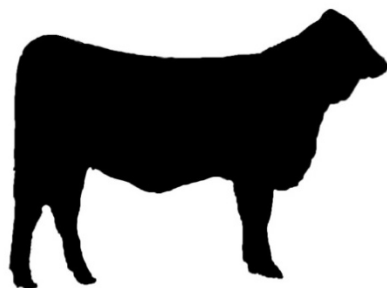


**2017 JBBA NATIONAL  
CONVENTION AND SHOW**



**July 16-22, 2017**

**Wichita Falls- MPEC**

**111 N Burnett St, Wichita Falls, TX**



# 33<sup>rd</sup> National Show and Convention

## July 16-22, Wichita Falls, Texas

### Schedule

#### **Sunday, July 16**

12:00 noon (firm) Barn opens – Ag Center Stall Barns

#### **Monday, July 17**

9:00 am – 5:00 pm Registration Open  
8:30 am – 11:00 am Leadership Conference for Intermediate and Senior Age Division  
1:00 p.m. JBBA Board Interviews  
3:00 pm – 5:00 pm Paper Check-in  
3:30 pm Herdsman Quiz  
5:00 pm JBBA Board of Directors Meeting

#### **Tuesday, July 18**

8:00 am – 12:00 noon Registration Open  
8:00 am Cattle entered in Ultrasound Carcass Class must be in place  
8:30 am Ultrasound Carcass Class and scan all other cattle that JBBA members would like to be scanned  
  
11:30 a.m. Kick-off Luncheon  
1:30 p.m. Public Speaking Contest (Junior, Intermediate, Senior)  
2:00 pm – 4:00 pm Paper Check-in  
4:00 pm All Cattle must be in place and papers checked in by show officials  
6:00 pm Fun Night

#### **Wednesday, July 19**

10:00 am Judging Contest  
11:30 am Lunch  
1:30 pm Showmanship (Junior, Intermediate, Senior)  
6:30 pm Auction of Calcutta Showmen followed by Supper

#### **Thursday, July 20**

8:00 am E6/Advancer Show, Bred and Owned Bull Show, Bred and Owned Heifer Show, Showmanship Contest for Pee-Wee and Calcutta-Ag Center Arena  
  
3:30 pm Lunch- Dutch Treat (snack bar will be open)  
6:00 pm General Membership Meeting and Director Elections / Coloring Contest  
Live Fun Auction followed by Supper

#### **Friday, July 21**

8:00 am National Heifer Show-Ag Center Arena  
  
7:00 pm Lunch-Dutch treat (snack bar will be open)  
Annual Awards Banquet and Dance

#### **Saturday, July 22**

10:00 am Cattle must be off grounds – owners of animals not removed by 10:00 am will be fined \$50 per animal.

**All events will be held at the Wichita Falls MPEC  
Schedule is subject to change.**



Dear JBBA Members and Families,

I would like to invite you to come join us in Wichita Falls, Texas for the 33<sup>rd</sup> annual JBBA Convention and National Show! The Junior Nationals is known to be a fun, friendly, and learning experience for those who attend. This is a week to remember, where we can join together and enjoy our time as many members will travel many miles through several states. This is a time for us to come closer together, and enjoy a week with others who share the same passion. Whether this is your first or last Nationals as a showman, it will be a week to remember, full of great memories, great people, and great cattle!

I encourage you all to come and jump in with both feet, because it is going to fly by! The board has been working to create an incredible National Show for everyone who attends. This year for the 2017 Nationals, the barns will open at noon Sunday, July 16. We have a week full of fun activities planned for the families and members. We must be moved out of the barns by 10 am Saturday, July 22. We hope that you all have safe travels, both coming and going.

Our goal is to create a fun environment but also to provide many opportunities for all those who attend. The activities include: the heifer show, bred and owned heifer and bull shows, carcass ultrasound contest, speech contest, herdsman quiz, leadership seminar, livestock judging contest, many meals, live and silent auctions, fun night, and we end it all with the Awards Banquet and the dance. Each of these will help participants develop skills, but also have fun while doing so. I hope you all come and participate, you will never know what you like unless you try it all. If you participate in all the events and do well, you are eligible for All Around Awards.

Once again, I invite you all to join us at Wichita Falls, Texas July 16-22 for the 2017 Junior Beefmaster Breeders Association National Show and Convention. I look forward to seeing you all there and wish you all safe travels. This is a week you won't forget and you won't regret coming!

Looking forward to seeing you there!

Seth Byers  
2016-2017 JBBA National President

## JBBA National Show and Contest Information

### National Heifer Show

The National Heifer Show is open to all bona fide JBBA members. All JBBA National Show Rules and Guidelines will be followed.

- Entry Fee is \$30 per heifer (\$60 late entry fee per heifer)
- Exhibitor must compete to qualify for an All Around Award
- A class may be split at the discretion of the show official/coordinator. Every effort will be made to split classes on a monthly basis.
- Pair Classes: To be eligible to show in the pair classes, all heifers MUST HAVE their BBU registered calf at side. Calves at side must be haltered
- Class & Division breaks will be posted by show staff on Wednesday, after check-in is completed.

### National Heifer Show Class Breaks

Class No.

1	Junior Heifer Calves	February 1-March 31, 2017
2	Late Winter Heifer Calves	January 1 - 31, 2017
3	Early Winter Heifer Calves	November 1 - December 31, 2016
4	Fall Heifer Calves	September 1 - October 31, 2016
5	Senior Heifer Calves	July 1 – August 31, 2016
6	Summer Junior Heifers	May 1 - June 30, 2016
7	Late Spring Junior Heifers	April 1 - 30, 2016
8	Early Spring Junior Heifers	March 1 - 31, 2016
9	Late Winter Junior Heifers	February 1 - 28, 2016
10	Early Winter Senior Heifers	January 1 - 31, 2016
11	Late Fall Senior Heifers	November 1 - December 31, 2015
12	Early Fall Senior Heifers	September 1 - October 31, 2015
13	Summer Senior Heifers	May 1 - August 31, 2015
14	Spring Pairs	January 1 - April 30, 2015
15	Fall Pairs	September 1 - December 31, 2014
	Grand Champion Heifer	
	Reserve Grand Champion Heifer	

### Awards for National Heifer Show

Class Winner	Award & Ribbon	\$60
2 <sup>nd</sup>	Ribbon	\$50
3 <sup>rd</sup>	Ribbon	\$40
4 <sup>th</sup>	Ribbon	\$30
5 <sup>th</sup>	Ribbon	\$20
6 <sup>th</sup> -10 <sup>th</sup>	Ribbon	
Division Champion	Banner	\$200
Reserve Division Champion	Banner	\$100
Grand Champion	Banner & Trophy Buckle	\$1000
Reserve Grand Champion	Banner & Trophy Buckle	\$750

## Bred and Owned Heifer Show

- Heifer(s) must be entered in the National Heifer Show to compete (cannot enter in Bred and Owned Show only).
- Exhibitors must present an original Bred and Owned certificate at time of check-in. Bred and Owned certificates may be obtained by contacting the BBU office and providing the registration number. Owners of Bred and Owned animals are defined as follows:
  1. Breeder- That individual, corporation or firm who owned the dam at the time of conception of the animal in question.
  2. Owner- That individual, corporation or firm who owned the dam at the time of birth of the animal in question.
  3. JBBA members entering a Bred and Owned animal must have had the dam of said animal in their name prior to conception of said animal, regardless of how conception was made and own said dam at the time of animal's birth. Animals produced from purchased or transferred embryos cannot be considered bred and owned animals.
  4. Joint ownership of the dam is permitted; however, for offspring to qualify as a JBBA Bred & Owned animal, all owners of the dam must be JBBA members, except in the case of siblings where one sibling has become too old for JBBA membership, joint ownership is acceptable as long as the older sibling was a JBBA member and has maintained continuous uninterrupted membership in the BBU since the expiration of their JBBA membership as determined by the BBU office.
- \$15 entry fee per heifer (\$30 late entry fee per heifer).
- Not a mandatory show for All Around Award, however, points will be awarded toward All Around if entered and animal is exhibited.
- A class may be split at the discretion of the show official/coordinator.
- Pair Classes: To be eligible to show in the pair classes, all heifers MUST HAVE their BBU registered calf at side. Calves at side must be haltered
- Official class breaks will be posted by show staff on Wednesday, after check-in is completed.

**ENTRIES ARE DUE FRIDAY, JUNE 16, 2017**  
**At <http://jbba.fairmanager.com/>**

Bred and Owned Heifer Show Class Breaks

Class No.		
1	Junior Heifer Calves	February 1-March 31, 2017
2	Late Winter Heifer Calves	January 1 - 31, 2017
3	Early Winter Heifer Calves	November 1 – December 31, 2016
4	Fall Heifer Calves	September 1 - October 31, 2016
5	Senior Heifer Calves	July 1 - August 31, 2016
	Calf Champion	
	Reserve Calf Champion	
6	Summer Junior Heifers	May 1 - June 30, 2016
7	Late Spring Junior Heifers	April 1 - 30, 2016
8	Early Spring Junior Heifers	March 1 - 31, 2016
9	Late Winter Junior Heifers	February 1 - 28, 2016
	Junior Champion	
	Reserve Junior Champion	
10	Early Winter Senior Heifers	January 1 - 31, 2016
11	Late Fall Senior Heifers	November 1 - December 31, 2015
12	Early Fall Senior Heifers	September 1 - October 31, 2015
13	Summer Senior Heifers	May 1 – August 31, 2015
14	Spring Pairs	January 1 - April 30, 2015
15	Fall Pairs	September 1 - December 31, 2014
	Senior Champion	
	Reserve Senior Champion	
	Grand Champion Bred and Owned Heifer	
	Reserve Grand Champion Bred and Owned Heifer	

Awards for Bred and Owned Heifer Show

Class Winner	Award & Ribbon	\$25
2 <sup>nd</sup> Place	Ribbon	\$25
3 <sup>rd</sup> -10 <sup>th</sup>	Ribbon	
Division Champion	Award	
Reserve Division Champion	Award	
Champion Bred and Owned Heifer	Banner, Trophy Buckle, and Semen Tank	\$750
Reserve Grand Champion	Banner and Trophy Buckle	\$500

The exhibitor of the Champion Bred and Owned Heifer will have his/her name placed on the Bred and Owned trophy which will be kept in the possession of the winner until the next year's National Junior Heifer Show. An individual who has the Champion Bred and Owned at the National Junior Heifer Show three (3) times will retire the trophy.

## Bred and Owned Bull Show

- Show is open to bull(s) born from March 31, 2017 - September 1, 2015
- Bull(s) must be Bred and Owned by the exhibitor
  - All bulls must have Bred and Owned certificate. Exhibitors must present an original Bred and Owned certificate at time of check-in. Bred and Owned certificates may be obtained by contacting the BBU office and providing the registration number.
- All bulls exhibited must have a nose ring (temporary or permanent) with a lead strap attached to it.
- Each Beefmaster bull eighteen (18) months of age or older must have passed a fertility examination given by a licensed veterinarian and the results of the examination must be presented at check-in. Once a bull has a positive examination, retesting is not required.
- Any entry that is unruly and poses danger to other exhibitors, or if exhibitor loses control of their animal twice during the class, the animal will be dismissed from the show arena by the judge or arena director or designee.
- \$15 entry fee per bull (\$30 late entry fee per bull).
- Not a mandatory show for All Around points. If an exhibitor doesn't receive the 25 points from the Bred & Owned heifer show, that exhibitor may receive those points when he/she exhibits his/her Bred & Owned bull.

## Bred and Owned Bull Show Class Breaks

Class No.		
1	Spring Bull Calves	March 1-31, 2017
2	Winter Bull Calves	January 1- February 29, 2017
3	Senior Bull Calves	November 1 – December 31, 2016
	Calf Champion	
	Reserve Calf Champion	
4	Fall Bull Calves	September 1 – October 31, 2016
5	Summer Yearling Bulls	May 1 – August 31, 2016
	Junior Champion	
	Reserve Junior Champion	
6	Spring Yearling Bulls	March 1 – April 30, 2016
7	Winter Yearling Bulls	January 1 – February 28, 2016
8	Fall Yearling Bulls	September 1 – December 31, 2015
	Senior Champion	
	Reserve Senior Champion	
	Grand Champion Bred and Owned Bull	
	Reserve Grand Champion Bred and Owned Bull	

## Awards for Bred and owned Bull Show

1 <sup>st</sup> -3 <sup>rd</sup> Place	Ribbon	
Division Champion	Banner	\$25
Reserve Division Champion	Banner	\$25
Champion Bred and Owned Bull	Buckle	\$300
Reserve Grand Champion	Buckle	\$150

### Advancer/E6 Heifer Show

- Heifers must be either registered BBU Advancers or E6 heifers to compete.
- All purebred Beefmaster females with either an Advancer or E6 heifer calf at side will show in the Advancer/E6 Heifer Show Only.
- Pairs consisting of a Registered Advancer dam, (less than 87.5% Beefmaster) with a Certified, Registered Beefmaster Calf (87.5% Beefmaster or greater), will show in the Advancer Heifer Show.
- An E6 cow with a *bull calf* at side is not eligible to show in the E6/Advancer Show.
- **Starting in 2018, there will no longer be an Advancer/E6 Show at the JBBA National Convention and Show.**
- Entry Fee is \$30 per heifer (\$60 late entry fee per heifer)
- No points given for All Around Award
- Pair Classes: To be eligible to show in the pair classes, all heifers MUST HAVE their BBU registered calf at side. Calves at side must be haltered

### Advancer/E6 Heifer Show Class Breaks

Class No.

1	Spring Heifer Calves	January 1- March 31, 2017
2	Winter Heifer Calves	October 1- December 31, 2016
3	Senior Heifer Calves	July 1- September 30, 2016
4	Late Spring-Early Summer Heifer Calves	April 1- June 30, 2016
5	Late Winter-Early Spring Heifer Calves	January 1- March 31, 2016
6	Fall Senior Heifers	September 1- December 31, 2015
7	Summer Senior Heifers	May 1- August 31, 2015
8	Spring Pairs	January 1- April 30, 2015
9	Fall Pairs	September 1- December 31, 2014

Grand Champion Advancer/E6 Heifer

Reserve Grand Champion Advancer/E6 Heifer

### Awards for Advancer/E6 Heifer Show

Class Winner	Award & Ribbon
2 <sup>nd</sup> Place	Ribbon
3 <sup>rd</sup> Place	Ribbon
Champion Advancer/E6 Heifer	Trophy Buckle
Reserve Grand Champion Advancer/E6 Heifer	Trophy Buckle

## **2017 JBBA National Show Judges**

**Owned Heifer Show:** Matt Claeys

**Bred and Owned Heifer, Bulls, and E6/Advancer Show:** Dr. Dave Nichols

**Showmanship:** Dr. David Roper



## Showmanship Contest

- To be eligible for the Showmanship Contest the contestant must be entered in the National Junior Heifer Show.
- Entry fee is \$10.00 per contestant
- Exhibitor must compete to qualify for an All Around Award
- Exhibitor must show animal entered in their name. The animal that you show in any showmanship heat(s) will be the animal that must be shown in the showmanship finals
- Cow/calf pairs are allowed to show in showmanship. You do not have to show the calf in showmanship. If you choose not to show the calf in showmanship, the calf is not allowed around the perimeter of the show arena. However, if you show a cow/calf pair in the showmanship heat, you must show the cow/calf pair in the finals.
- Exhibitors will be randomly assigned to heats. Number of heats will be determined by number of exhibitors participating in showmanship contests. Showmanship heats will be announced on Tuesday afternoon.
- Each contestant must wear the exhibitor number for the heifer they are showing. They must turn in showmanship number to the office by Tuesday at 4pm.
- Champion Showmanship winners from each division will compete for an overall champion showmanship award.

### Awards for Showmanship Competition

Champion Junior, Intermediate & Senior  
Reserve Champion Jr., Int. & Sr.  
1<sup>st</sup>-10<sup>th</sup> in each division

Trophy Buckle  
Award  
Ribbon

## Calcutta Showmanship

- JBBA Directors and Officers will select 10 past JBBA Members or adults to participate in the showmanship contest.
- Names of cattle on the grounds will be placed in a hat and drawn for before the auction. Each adult will pull a name and that calf will be the calf they will show.
- The auction will be held during dinner Wednesday night.
  - 70% of the Calcutta showman will be auctioned off individually to the highest bidder, while the remaining 30% of the showman will be auctioned off to one buyer.
- The person who purchases on the winning showman will receive 50% of the total pot and the other 50% goes to JBBA.
- The contest will be held after the Pee Wee Showmanship on Thursday.

## Pee Wee Showmanship

- Open to all youngsters under the age of 6 as of January 1
- Contestants do not need to be a JBBA member to participate and can exhibit any heifer
- At least one parent MUST accompany the child while in the ring
- There is no entry fee

## Ultrasound Carcass Show

The JBBA Ultrasound Carcass Class was designed to help educate JBBA members and parents about the importance of collecting and submitting performance data on their Beefmaster cattle. Proper age for animals to be scanned is between 320 and 550 days of age. Animals ultrasounded less than 320 days and more than 550 days of age will not be included in the BBU database for EPD calculations. Any animal is eligible to be scanned however animals that fall within the proper age break are only eligible for awards.

- Animals must be entered in the National Show to compete.
- All animals must be within the Age window for Ultrasound data collection of 320-550 days of age.
- Ultrasound carcass class is open to both heifers and bulls. You may enter as many animals as you want (no limit).
- \$15 entry fee per animal
- No points given for All Around Award
- Any animal that a JBBA member wishes to have scanned should be entered at time of entry.
- Only animals that fall within the age window for ultrasound data collection of 320-550 days of age (September 1, 2016 (320 days)- January 15, 2016 (550 days) will be put into classes.
- Classes will be determined according to the number of entries and will be broken into age appropriate classes (i.e. 90 days or less if possible depending on numbers entered)
- Exhibitor must walk their animal through to collect scan data on.
- Ultrasound data will be collected by an Ultrasound Guidelines Council (UGC) certified technician or data may also be collected by a UGC chute side technician (someone that has passed both the field certification and the lab certification on the BIA Pro System).
  - All data will be RAW and collected by a chute-side certified tech so that the software can interpret the collected images.
  - Data will be processed through a Beefmaster friendly grid formula (selected by BBU staff) to determine a dollar value for each entry.
- Each class will be ranked according to carcass value and awards will be presented within each class.
- If your animals have previously been scanned and data has been sent to the BBU office you may still enter the ultrasound carcass class.
  - Previous scan data will not be used for ultrasound carcass class. All animals must be scanned during the Ultrasound Carcass class at the 2017 Nationals. Animals will be scanned by ages.
- Awards will be presented for all class winners.

## **Follow Us on Social Media**

Don't forget to "Like" the Junior Beefmaster Breeders Association page on Facebook and follow us on Twitter, @beefmasterbreeders and Snapchat @beefmasters.org  
It will keep you updated on all deadlines and upcoming JBBA events

## Judging Contest

- Contestants will place several classes of four beef animals
- Teams will be made up of four individual contestants. Team name and members will be turned in during sign up.
- During the contest, any contestants caught discussing with other individuals will be disqualified.
- Score cards/scantrons will be provided
- Individuals must compete to qualify for an All Around Award
- Non-JBBA members are invited to participate in this contest but will not be eligible for official placing's in the JBBA divisions.

### Awards for Judging Contest

Champion Team	Award
Reserve Champion Team	Award
1 <sup>st</sup> Place Individual in each Division (including Adult)	Award
2 <sup>nd</sup> Place Individual in each Division	Award
1 <sup>st</sup> - 10 <sup>th</sup> in each Division (including Adult)	Ribbon

## Herdsman Quiz

- Three Divisions
  - Junior
  - Intermediate
  - Senior
- Study guide information can be found at [www.BEEFMASTERS.org](http://www.BEEFMASTERS.org) or by calling the BBU office to request a copy
- Topics Covered Include
  - Information from:
    - BBU Brochures and Publication
    - Beef Improvement Federation (BIF)
    - 2017 BBU Spring Sire Summary
  - Basic Farming and Ranching Information
  - Basic Cattle Information and Terminology
- Individuals must compete to qualify for an All Around Award

### Awards for Herdsman Quiz Competition

1 <sup>st</sup> Place in each Division	Award
2 <sup>nd</sup> Place in each Division	Award
1 <sup>st</sup> - 10 <sup>th</sup> in each division	Ribbon

# Scholarship Opportunities

Don't forget we have numerous scholarships available for JBBA members! The applications can be found online at [beefmasters.org/purebred/juniors.php](http://beefmasters.org/purebred/juniors.php) or (210)732-3132.

## Public Speaking Contest

- Sign up for public speaking contest by 9:00 a.m. on Tuesday, July 20<sup>th</sup>
- Individuals must compete to qualify for an All Around Award
- All Divisions are required to bring typewritten, double-spaced copies of their speech (with bibliography) on 8 ½ X 11 white paper to contest check-in.
  - Senior and Intermediate Division Contestants bring THREE copies
  - Junior Division Contestants bring TWO copies
- Time limit
  - Senior and Intermediate Division- 3-7 minutes
  - Junior Division- 2-4 minutes
- No visual aid or props. Notes and notecards are allowed, but speech should not be read directly.
- Judging/Scoring based on
  - Communication
  - Introduction, body and conclusion of speech
  - Knowledge of topic (judges will be allowed to ask questions)
  - Time/length of speech presented
- The public is invited to attend.
- 1<sup>st</sup> Place winners in each Division will give their speech at the JBBA Awards Banquet and may have the opportunity to present at the BBU Convention.

### Awards for Public Speaking

1st Place in each Division	Award
2nd Place in each Division	Award
1st - 10th in each division	Ribbon

- 2017 Topics
  - **Senior Topics**
    - The FDA recently announced the new Veterinary Feed Directive (VFD), what are some short term implications of this, and what are some possible long term effects of the VFD on the Beefmaster Breed?
    - BBU recently unveiled two new indexes \$T and \$M. How can these two indexes be used in the selection of bulls and females and determining the value of these animals?
  - **Intermediate Topics**
    - Artificial insemination (AI) is a tool that is being used more and more in the beef cattle industry, what is the value of AI in the Beefmaster Breed?
    - Why is it important to keep performance records on cattle and how can it improve Beefmasters?
  - **Junior Topic**
    - How can you promote Beefmasters to someone that is new to the cattle industry?

## All Around Champion

- Based on accumulated points from:
  - National Junior Heifer Show,
  - Bred-and-Owned Heifer or Bull Shows
  - Showmanship Contest
  - Judging Contest
  - Public Speaking Contest
  - Herdsman Quiz
  - Leadership Conference (Intermediate & Seniors only)
- Individuals **must compete in all** contests listed above (except Bred and Owned Shows) to be eligible for All Around Award.
- Overall Ties will be broken using placings from the following contest in the order listed:
  - Herdsman Quiz
  - Public Speaking
  - Showmanship Contest
  - Judging Contest
  - Heifer Show
  - Bull Show

## Points Explanation

- National Junior Heifer Show
  - Maximum of 100 points, from 2 highest placing heifers, per exhibitor.
  - 25 Points will be awarded to each exhibitor, one time, with a heifer entered and exhibited in the National Heifer Show.
  - Points are given only after heifer passes check-in procedures.
  - Points will be awarded as follows:

1 <sup>st</sup> Place	50 points	6 <sup>th</sup> Place	25 points
2 <sup>nd</sup> Place	45 points	7 <sup>th</sup> Place	20 points
3 <sup>rd</sup> Place	40 points	8 <sup>th</sup> Place	15 points
4 <sup>th</sup> Place	35 points	9 <sup>th</sup> Place	10 points
5 <sup>th</sup> Place	30 points	10 <sup>th</sup> Place	5 points
Participation 25 points (one time)			
- Bred and Owned Heifer & Bull Shows (not a required show)
  - Bred-and-Owned entries will each receive 25 points (1 time only) for entering and exhibiting in the Bred and Owned Shows.
  - Points will be awarded as follows:

Participation 25 points (one time)			
------------------------------------	--	--	--
- Showmanship Contest, Judging Contest, Public Speaking Contest, and Herdsman Quiz
  - Points will be awarded as follows:

1 <sup>st</sup> Place	50 points	6 <sup>th</sup> Place	25 points
2 <sup>nd</sup> Place	45 points	7 <sup>th</sup> Place	20 points
3 <sup>rd</sup> Place	40 points	8 <sup>th</sup> Place	15 points
4 <sup>th</sup> Place	35 points	9 <sup>th</sup> Place	10 points
5 <sup>th</sup> Place	30 points	10 <sup>th</sup> Place	5 points
Participation 50 points			

## All Around Champion... Continued

- Leadership Conference
  - Intermediate and Senior Divisions only (must attend the entire conference held Monday, July 17<sup>th</sup>)
  - Participation: 50 points
- Other Points/Placings information
  - In the case of a tie in a contest, all involved in a tie will be given the highest placing points for the purpose of all-around competition. Example: If 4 members tie for 3<sup>rd</sup> place in a contest, all 4 will receive 40 points.
  - For the purpose of determining placings for awards, tie breaker questions will be used. Example: 2 members tie for 3<sup>rd</sup> place in the Herdsman Quiz. Member A correctly answers the first tie breaker question, while Member B answers it incorrectly. Member A will be given the 3<sup>rd</sup> place award, while Member B will be given the 4<sup>th</sup> place award. Both will be credited with 3<sup>rd</sup> place points in the all-around competition.

### Awards for All Around Competition

#### Senior Division

1<sup>st</sup>, 2<sup>nd</sup> & 3<sup>rd</sup>

Trophy Buckle & \$1000 Heifer Certificate

4<sup>th</sup> – 10<sup>th</sup>

Trophy Buckle

#### Intermediate Division

1<sup>st</sup> & 2<sup>nd</sup>

Trophy Buckle & \$1000 Heifer Certificate

3<sup>rd</sup> – 10<sup>th</sup>

Trophy Buckle

#### Junior Division

1<sup>st</sup> & 2<sup>nd</sup>

Trophy Buckle & \$1000 Heifer Certificate

3<sup>rd</sup> – 10<sup>th</sup>

Trophy Buckle

Heifer Certificates must be redeemed by July 1, 2018. Details will be on the certificate awarded.

### Leadership Conference

- A two hour Leadership/Personal Development Conference will be held Monday, July 17, 2017 at 8:30 am
- All JBBA Board position applicants MUST attend this conference.
- Intermediate and Senior Exhibitors must attend the entire conference to qualify for an All Around Award
  - 50 participation points given towards the All Around Award

### JBBA Board of Officers and Directors

- Anyone that is seeking a position on the board must attend the leadership conference on Monday, July 17, 2017 and the JBBA Board Meeting on Monday, July 17, 2017.
- All those seeking a board position must submit a director's application. Applications may be turned in during Nationals. If turning in during Nationals applications are due by 12:00 p.m. on Monday, July 17, 2017 if mailing to the office applications must be received by July 10, 2017.
- Board candidates will be interviewed on Monday, July 17, 2017 at 1:00 p.m.

## PHOTOGRAPHY CONTEST

- Open to all JBBA members
- Only two entries per contestant
- Entries must be submitted electronically via email, CD-ROM or USB Flash Drive (printed photos will not be accepted)
- Pictures must be taken by the JBBA member who has entered it
- Entry Guidelines:
  - must be submitted in a .JPG, .JPEG, .GIF or .PDF format
  - cannot exceed the file size of 10MB
  - cannot be altered or digitally enhanced
  - must contain Beefmaster cattle and/or related activities
- Entries can be submitted:
  - Via email to [jnovak@beefmasters.org](mailto:jnovak@beefmasters.org)
    - no later than July 10<sup>th</sup>
    - Email MUST include Name, Age Division, Phone Number and Address
  - At National Convention on a CD-ROM (PC Compatible) or on a USB Flash Drive
    - Photos are due at by noon on Monday July 17, 2017
    - CD-ROM or USB Flash Drive MUST include Name, Age Division, Phone Number and Address.
- Photos, CDs and USB Flash Drives become the property of JBBA/BBU and can be used in any Beefmaster publications or promotional activities.
- Judging will be based on all aspects of photography

### Awards for Photography Contest

1<sup>st</sup> and 2<sup>nd</sup> place in each Division

Award Plaque

## **Join Beefmaster Cattlewomen**

The Beefmaster Cattlewomen would like to invite mothers and daughters in JBBA to join their organization.

For more information please contact Marie Welkener, President at (830) 583-9221 or

[mbwelkener@gmail.com](mailto:mbwelkener@gmail.com)

## PowerPoint Presentation

- Open to all JBBA members
- Only one entry per
- Entries can be submitted:
  - Via email to [jnovak@beefmasters.org](mailto:jnovak@beefmasters.org)
    - no later than July 10<sup>th</sup>
    - Email MUST include Name, Age Division, Phone Number and Address
  - At National Convention on a CD-ROM (PC Compatible) or on a USB Flash Drive
    - Presentations are due at by noon on Monday July 17, 2017
    - CD-ROM or USB Flash Drive MUST include Name, Age Division, Phone Number and Address
- JBBA members must be the sole designer and the presentation needs to be computer generated
- Presentation Guidelines
  - should be 3 -5 minutes
  - must have at least 2 pictures or clip art that support the idea of the presentation
  - may include but do not require music, video clip or slide transitions
  - must relate to JBBA, BBU or the Beefmaster breed in general
  - must be in PowerPoint format
- Presentations, CDs and USB Flash Drives become the property of JBBA/BBU and can be used in any Beefmaster publications or promotional activities.
- Presentation will be judged on:
  - 40% Slide Content
  - 35% Originality
  - 15% Technical Merit
  - 10% Overall Effect of Presentation

### Awards for PowerPoint Presentation

1<sup>st</sup> and 2<sup>nd</sup> place in each Division

Award Plaque

## Herdsmanship Award

The Herdsmanship Award is based but not limited to the appearance and neatness of the exhibitors stall and animal(s). Participation in contests throughout week, conduct and attitude will also be considered.

Champion Herdsman

Director Chair

Reserve Champion Herdsman

Director Chair

## JBBA TOP HAND AWARD

This award is similar to BBU Breeder of the Year Award, will recognize the JBBA member that participates in JBBA and BBU programs and is involved in building their herd and marketing their cattle. Showing cattle is not a criterion for this award and all JBBA members are eligible. Applications are available on the BBU website or by calling the office. Top Hand Applications are due to JBBA office on or before June 2, 2017



## 2017 JBBA National Show Hotel Arrangements: July 16-22, 2017

\*\*if you have a problem booking a room at any of the below hotels before the cutoff date ask to speak to the manager of that hotel\*\*

### Need to mention Junior Beefmasters when reserving room

#### **Candlewood Suites**

1320 Central Frwy.  
Wichita Falls, TX 76305  
940-322-4400 (Call hotel directly)  
\$99  
No Breakfast

#### **Econo Lodge**

1700 5th Street  
Wichita Falls, TX 76301  
940-761-1889 (Call hotel directly)  
\$45 Single, \$50 Double  
Complimentary Breakfast

#### **Fairfield Inn & Suites**

1020 Central Freeway  
Wichita Falls, TX 76306  
940-716-9577  
\$95  
Complimentary Breakfast

#### **Super 8**

1307 Kenley Ave. Wichita Falls, TX 76305  
940-322-8880 (Call hotel directly)  
Price TBD  
Complimentary Breakfast

#### **Best Western Plus University Inn & Suites**

4540 Maplewood Ave.  
Wichita Falls, TX 76308  
(940) 687-2025  
\$83.99+tax

#### **Courtyard Wichita Falls**

3800 Tarry Street  
Wichita Falls, Texas 76308  
(940) 696-0010  
\$104.00+tax cut off June 16

#### **La Quinta Inn & Suites Wichita Falls**

2511 E. Montgomery Place  
Wichita Falls, TX 76308  
(940) 386-9547  
\$86.00+tax

**Highlighted listings are  
closest to the show grounds.**

### **RV Camper Spots**

Camper spots will be available during the 2017 Nationals on a first come first serve basis.

Contact the Wichita Falls MPEC  
(940) 716-5500  
regarding their policy on camper spots