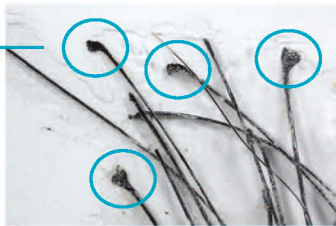


# HOW TO COLLECT HIGH-QUALITY HAIR ROOT SAMPLES

Collecting good hair root samples is crucial for reliable test results because bulbs are a reliable source of DNA. Proper collection will reduce the number of samples that fail in the lab due to insufficient quantity and quality of DNA.

**Visible Hair Roots**  
(Source of DNA)



## GETTING STARTED

To help assure the safety of the animal and the handler, properly restrain the animal with a halter, headlock, chute or whatever is most appropriate for the animal's size. Always wash your hands or use clean gloves. If you are using a device (e.g., hemostats), be sure to wipe it clean between animals. Additional attention must be used when collecting hair roots from calves under four (4) months of age, as adequate hair roots might be difficult to obtain.

## COLLECTING THE HAIR SAMPLES

- STEP 1.** Record the animal's tag number on the hair sample collector in the space provided. This animal ID will be used for reporting test results, so it's important to double-check for accuracy.
- STEP 2.** While holding the end of the tail switch, pull a pencil-thickness tuft of hair (at least 20 - 25 hair roots) from the tail switch, making sure hair roots are attached. Roots are under the skin of the tail and extract easily when pulled correctly. Pull the hair "up and away" from the way it lays to get as many roots as possible. Always collect dry hair samples and make sure the roots are not contaminated with feces. Hair root samples also may be obtained from other sources, such as ears or tailhead.
- STEP 3.** Open the hair sample collector completely. Place the hair on the back of the printed flap of the collector as shown, with roots close to the joined end. Peel off the backing paper, starting from the joined end, to expose the sticky backing of the flap.
- STEP 4.** Press the sticky plastic side down on top of the hair roots. Make sure the edges of the plastic are sealed around the collector. Also, verify that the roots are covered.
- STEP 5.** Trim the excess hair to the edges of the sample collector. Place the collectors in bundles of 10 - 15 in a resealable plastic storage bag. Complete the Sample Information Form with animal information and collector barcode number and ship to Zoetis.

**STEP 1**



**STEP 2**



**STEP 3**



**STEP 4**



**STEP 5**

